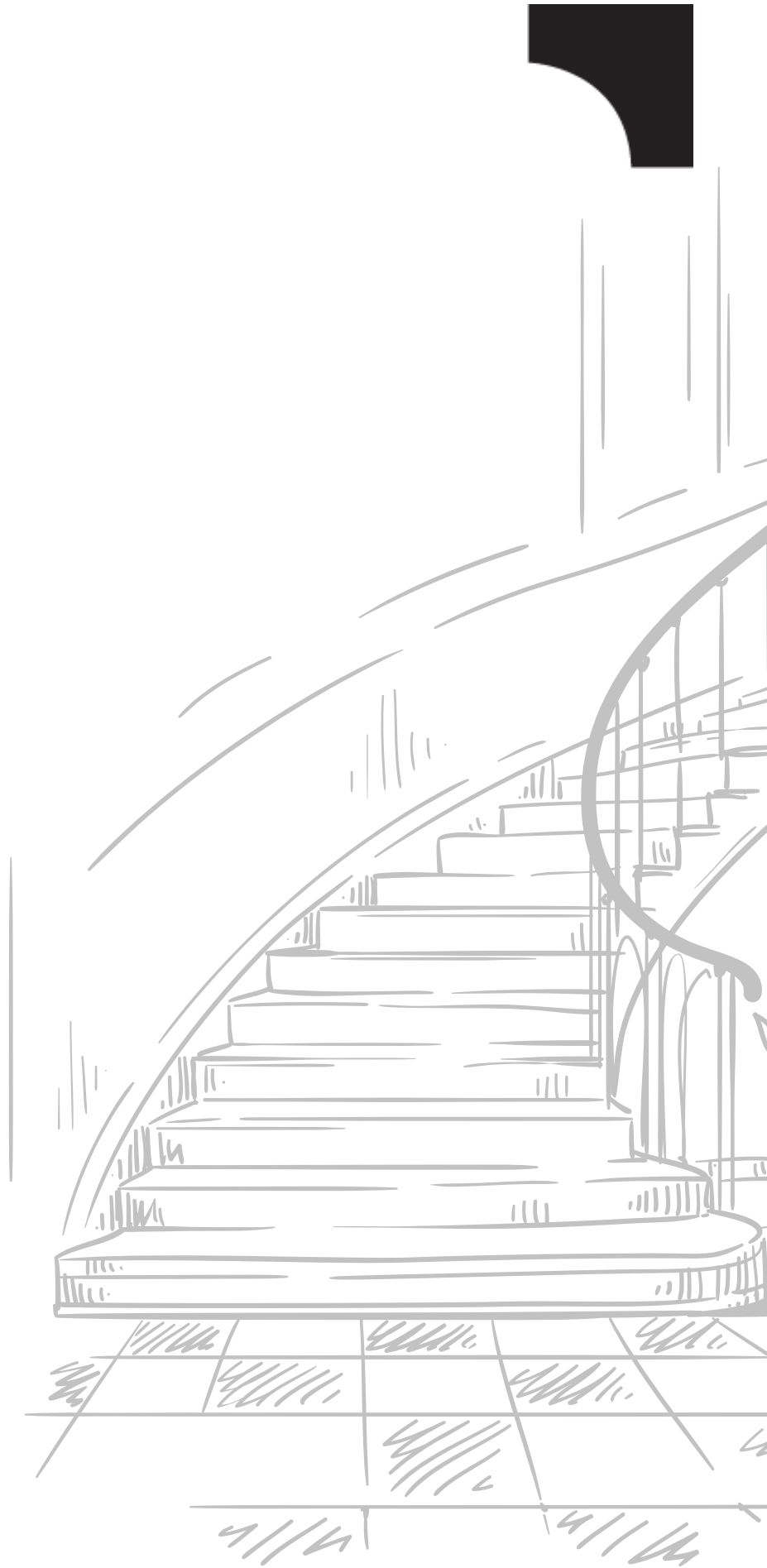





**Duo**  
interiors



 0320-0000120

 111-Fairways Commercial, Defence Raya, Phase 6, Lahore

 [www.duointr.com](http://www.duointr.com)



# ABOUT US

---

Welcome to Duo Interiors – where creativity meets functionality to transform spaces into living art. We are a premier interior design company dedicated to delivering bespoke design solutions that reflect your unique taste and lifestyle



# Our Vision

---

Determined to set trends in social & environmental design with ever changing needs and aspirations .

# Our Mission

---

Pace of our lives is accelerating & our communities must evolve accordingly. Our designs reflect our vision of Improved Lifestyle, biodiversity and Social Equity.

We combine the desires of our clients with our divers expertise to bring exclusive experiences to people. Our services allow us to design modern systems creating places that promote human & ecological well being.

# OUR SERVICES :

---



- Interior Design



- Lighting design



- Expert project consultation



- Furniture layout and planning



- Mood Board design



- Flooring and surface selection layout

# Residential **Portfolio**





# Mr. Imran

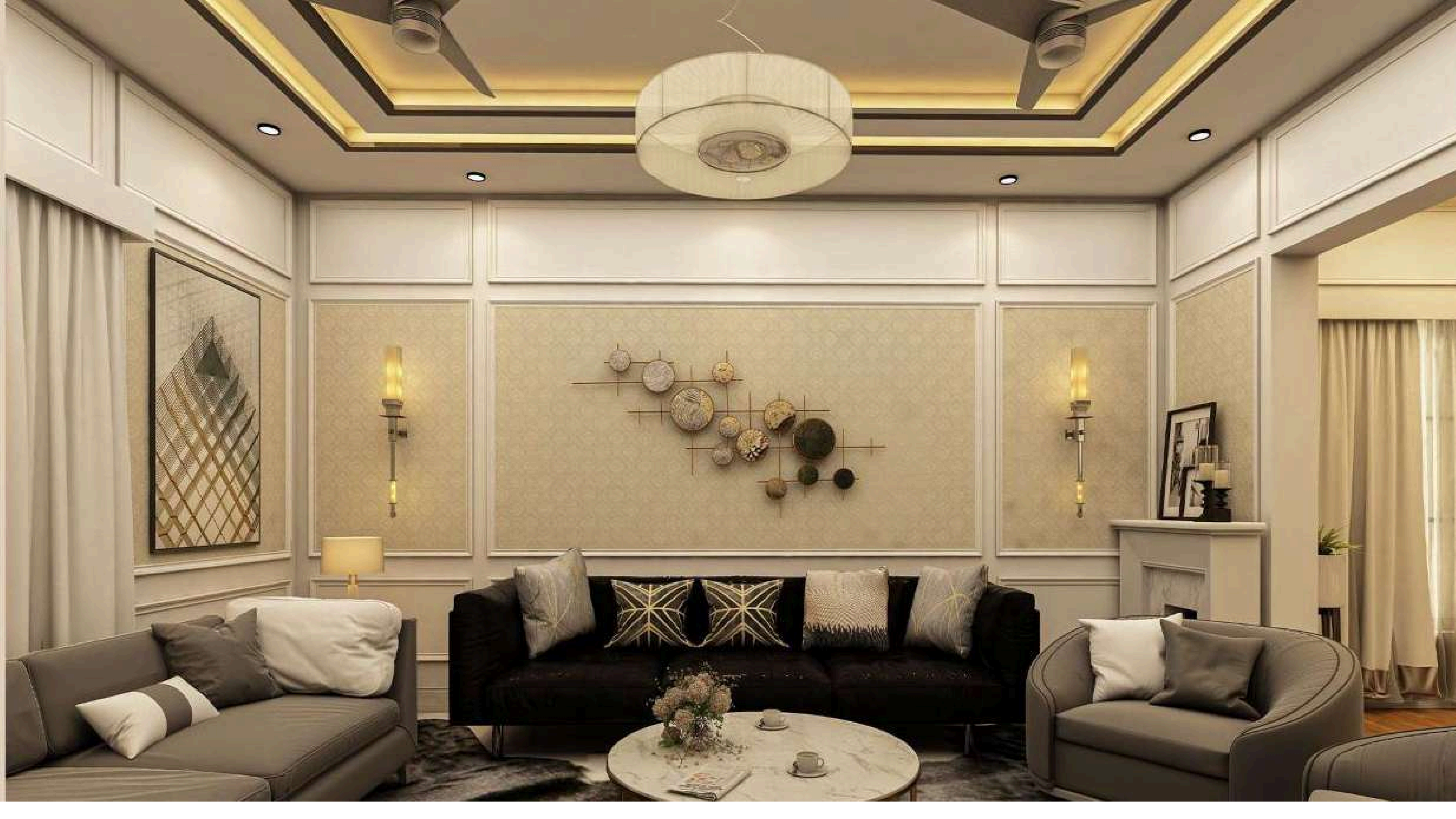
- Location** Lahore
- Clients** Mr Imran
- Program** 5 Bedroom, with attach Bath, Lounge ,Double Hight Entrance Lobby, Dining ,Drawing Room, Kitchen, Terrace
- Area** 1800sqft
- Scope** Interior Design
- Status** Completed















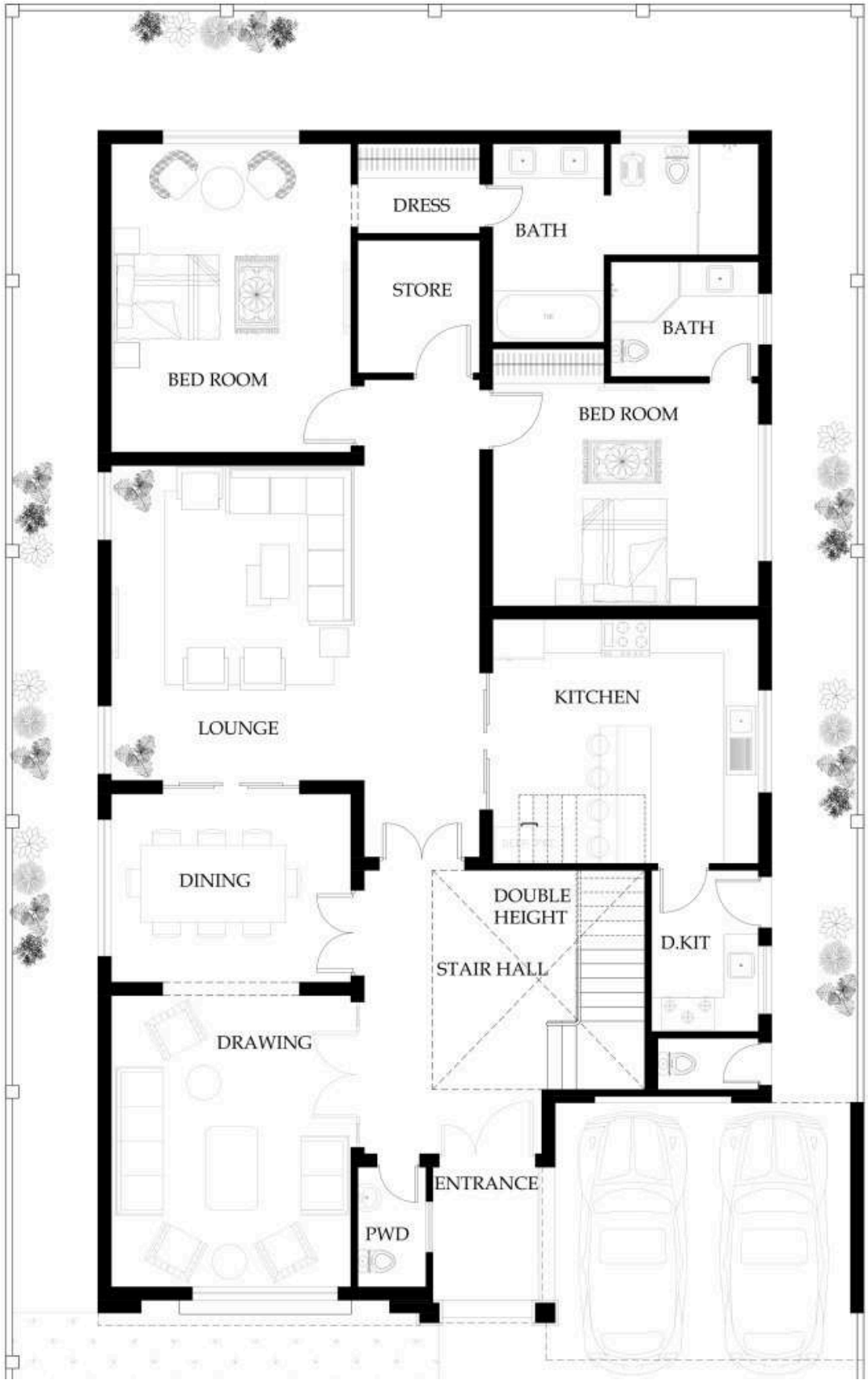








# Layouts







# PUECHS 1 KANAL

**Location** Lahore  
**Clients** Mr Imran  
**Program** 5 Bedroom, with attach Bath, Lounge, Double Hight Entrance Lobby, Dining, Drawing Room, Kitchen, Outdoor Terrace & Frist Floor Lounge  
**Area** 7645sqft  
**Scope** Interior Design  
**Status** Completed



































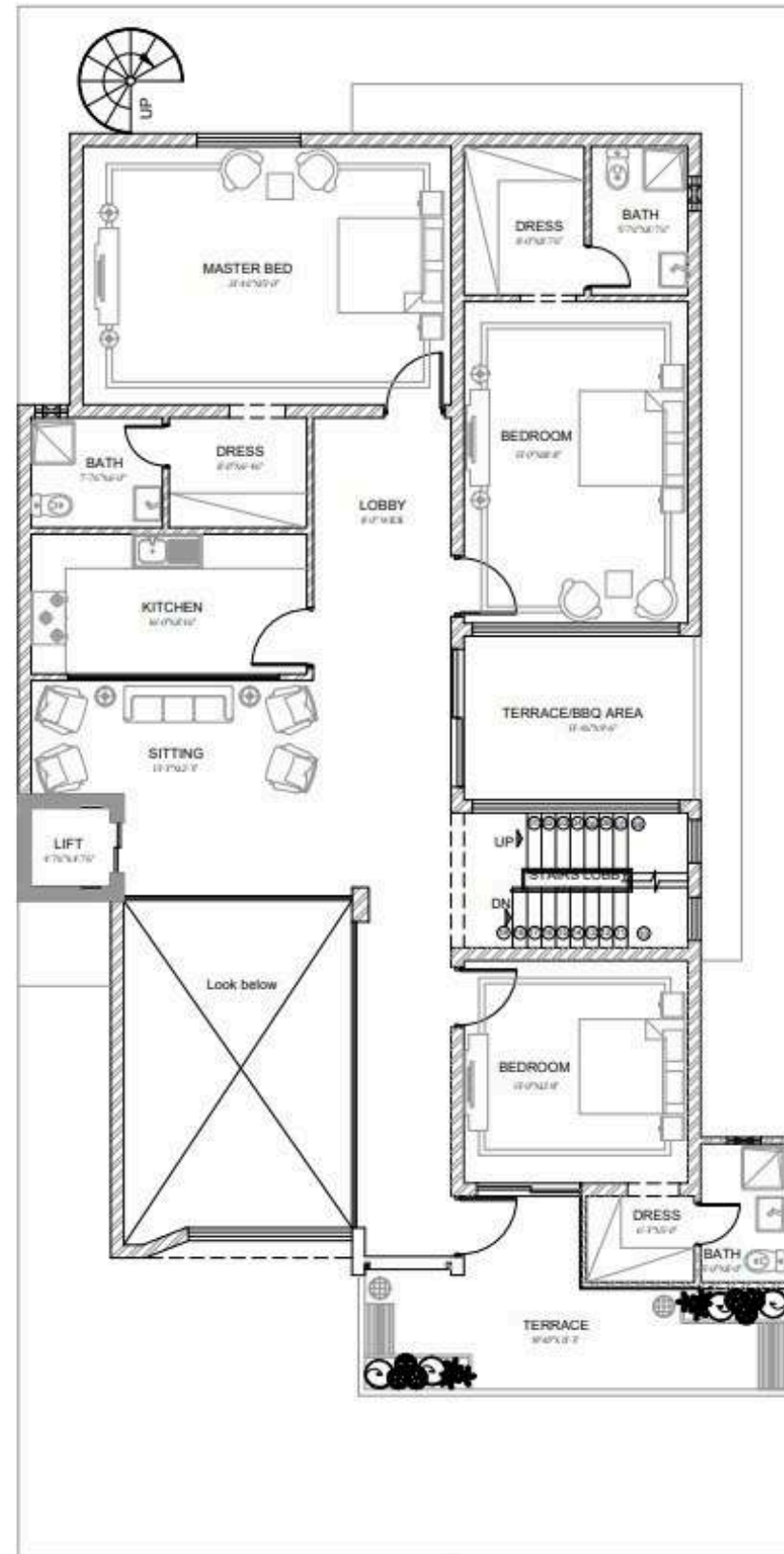




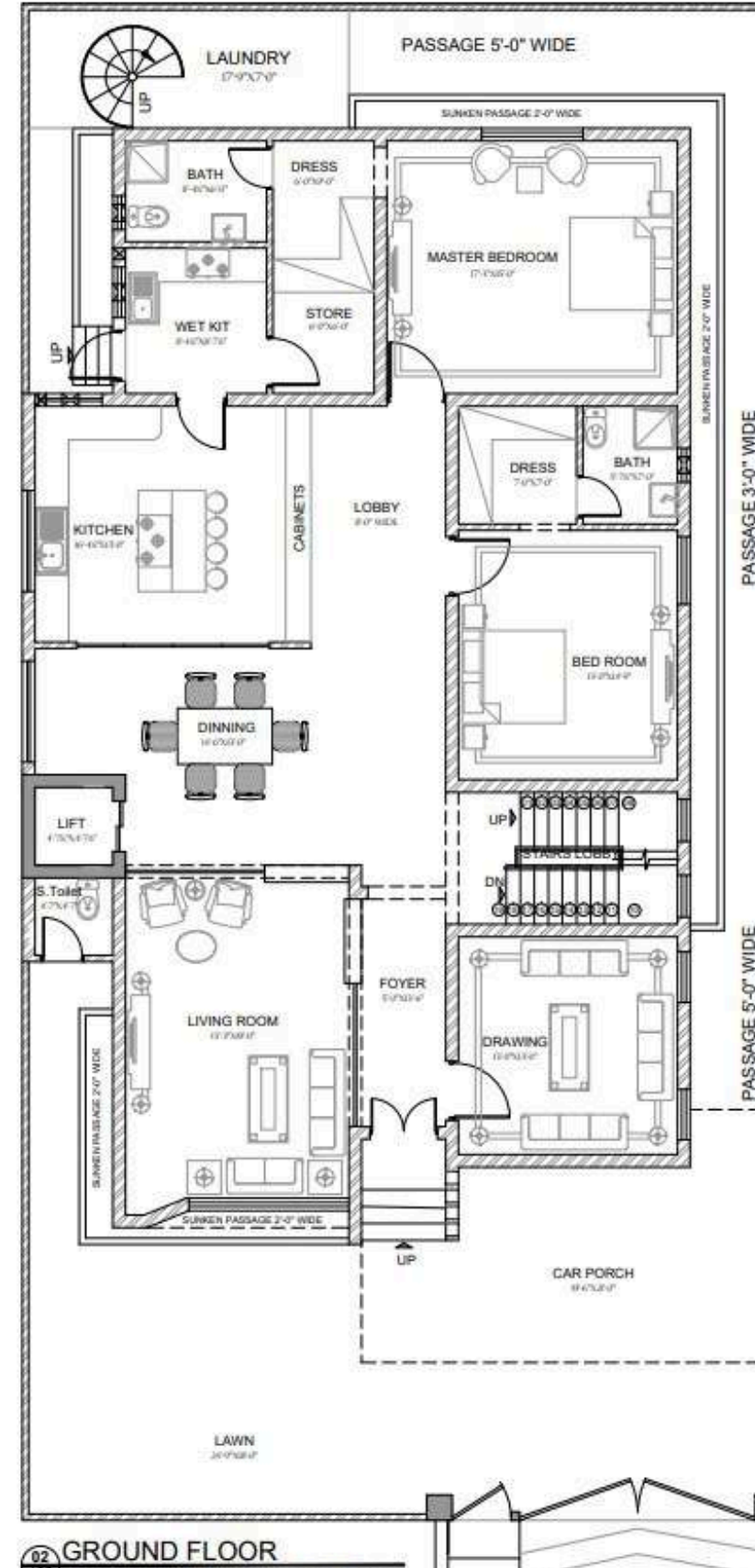




# Layouts



01 FIRST FLOOR FURNITURE LAYOUT PLAN  
SCALE: 1/8"=1'-0"

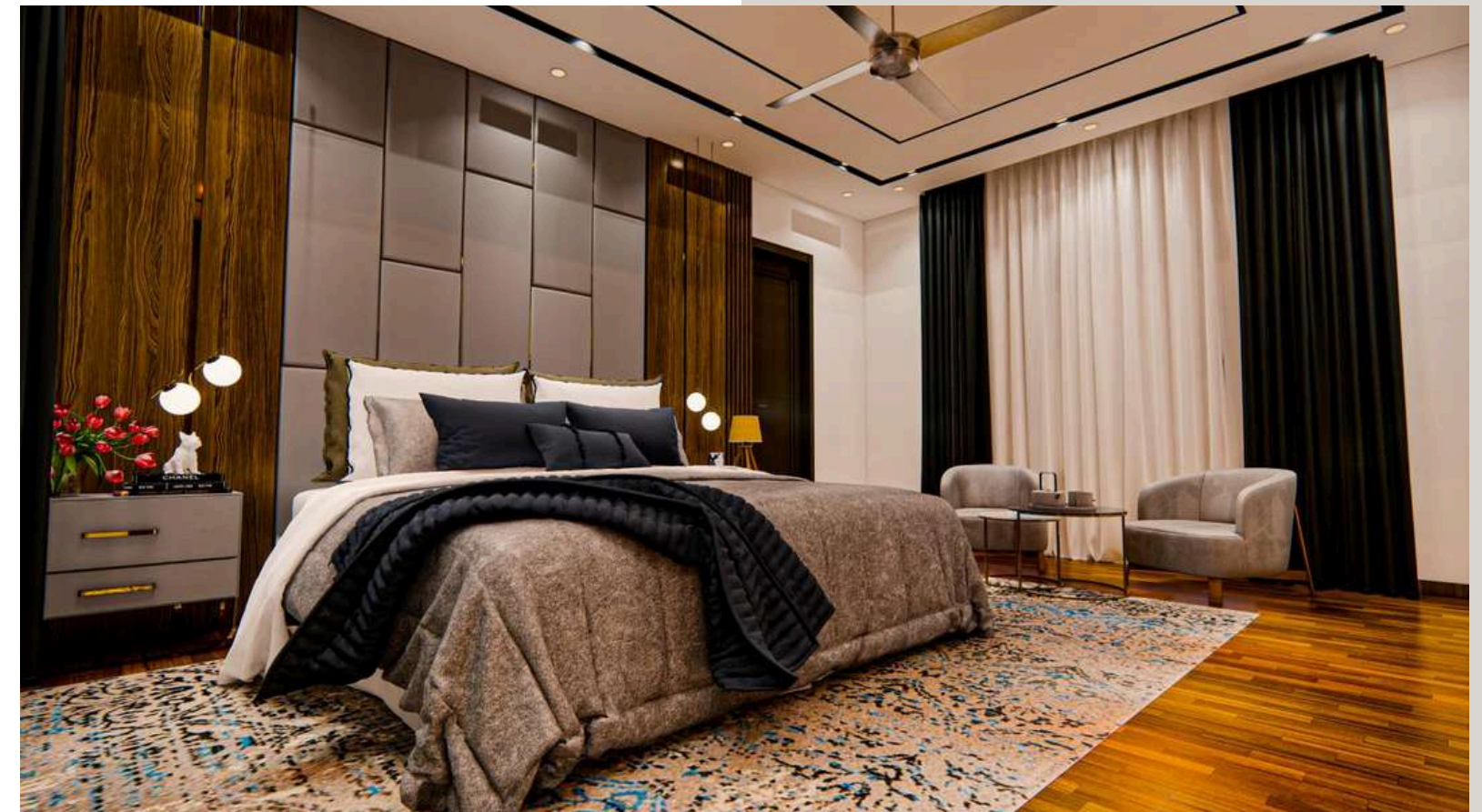


02 GROUND FLOOR



# 120 G Valencia

- Location** Lahore
- Clients** Mr. Hassaan Ahmad
- Program** 5 Bedroom, Swimming pool, Double height Entrance Lobby  
Dining room, Kitchen, Terrace.
- Area** 9750sqft
- Scope** Interior Design
- Status** Completed































# Hilton Suites Hotel

- Location** Lahore
- Clients** Mr. Ibrarahmad
- Program** Bedrooms with attach baths.
- Area** 1800 sqft
- Scope** Interior Design
- Status** Completed































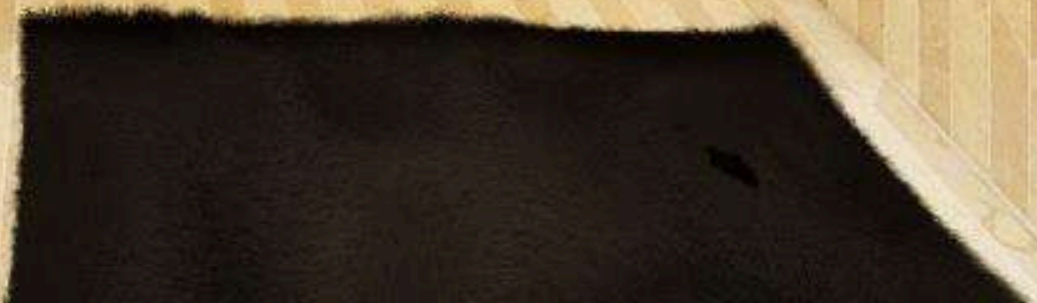












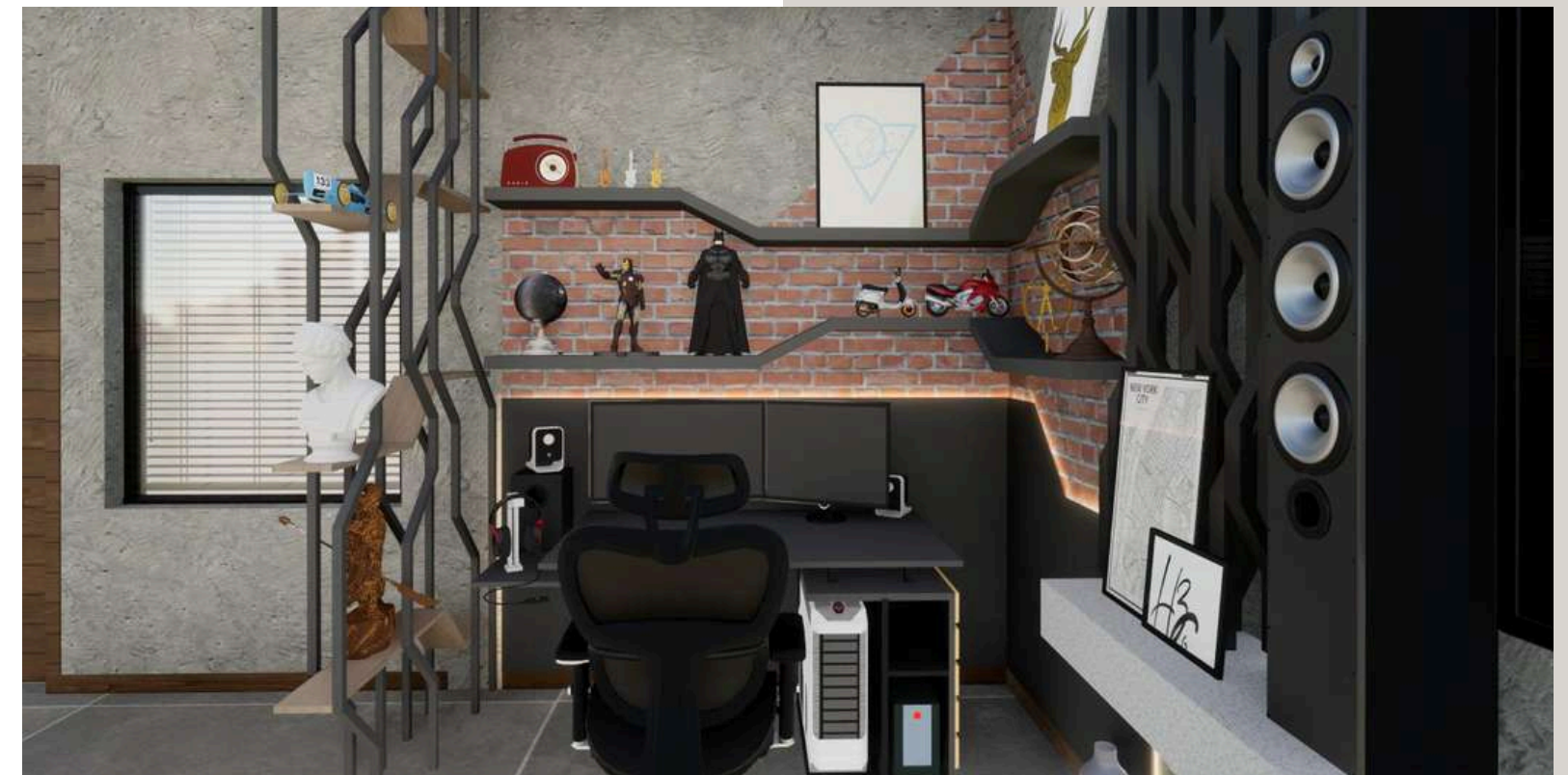






# Mr. Ali Shah

**Location** Lahore  
**Clients** Mr. Ali Shah  
**Program** Bedroom  
**Area** 300sqft  
**Scope** Interior Design  
**Status** Completed













# Luxury Apartments – Bahria orchard

- Location** Lahore
- Clients** Mr.Muaz Rauf
- Program** 5 Bedroom, Bath Room Living Rooms, Kitchen, Open to sky, Stair Lifts
- Area** 1800sqft
- Scope** Interior Design
- Status** Completed



















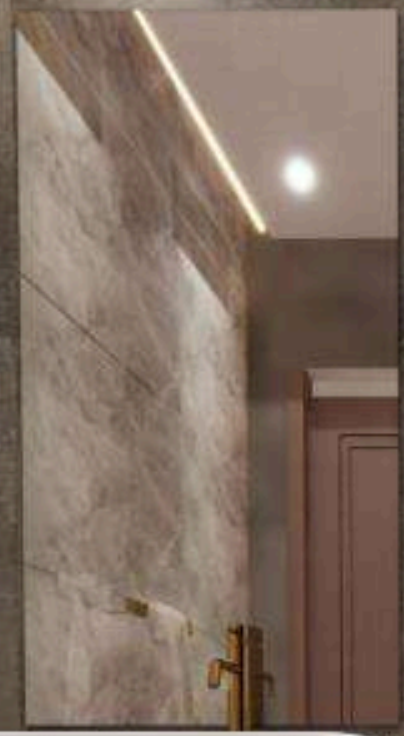
































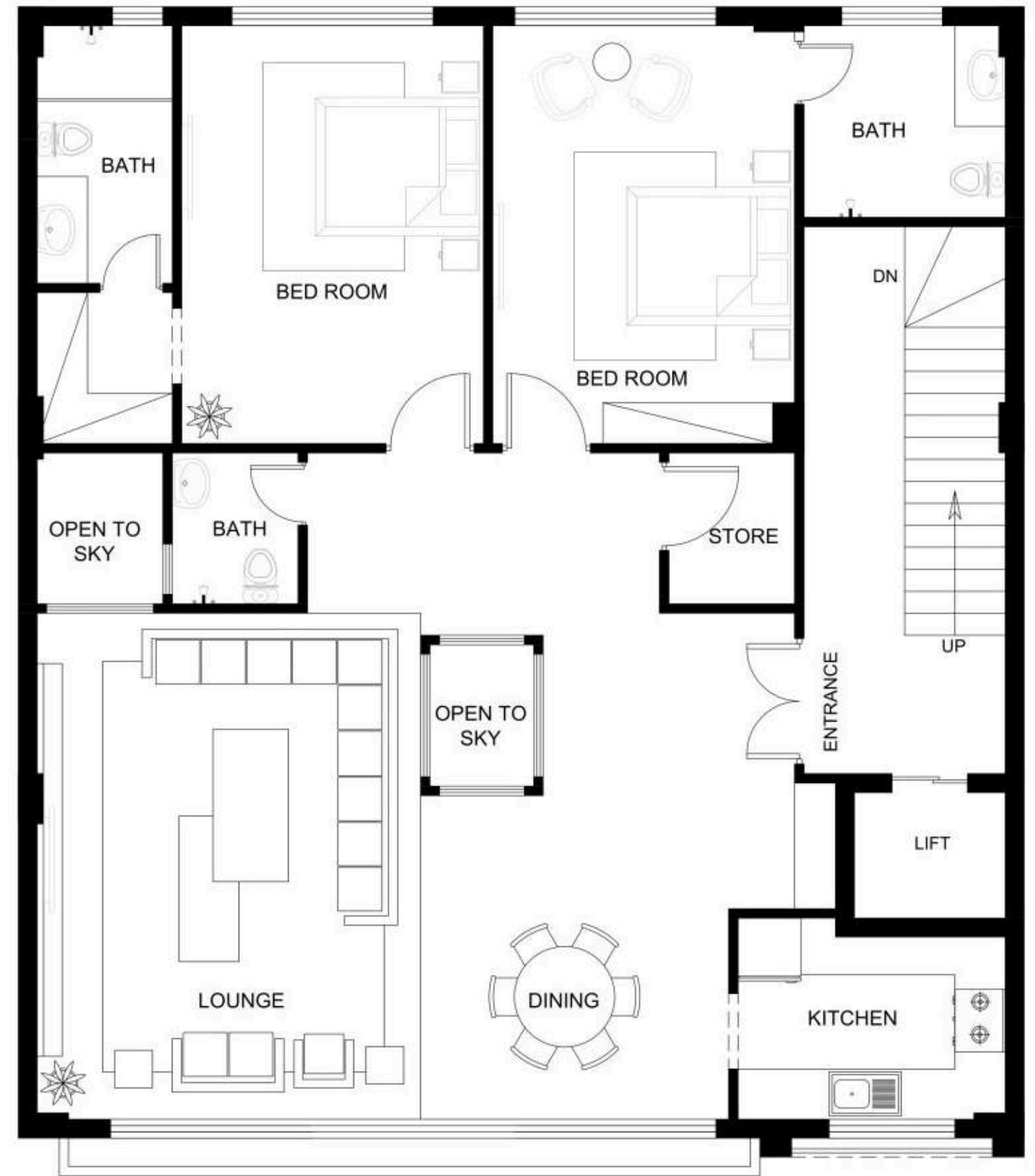
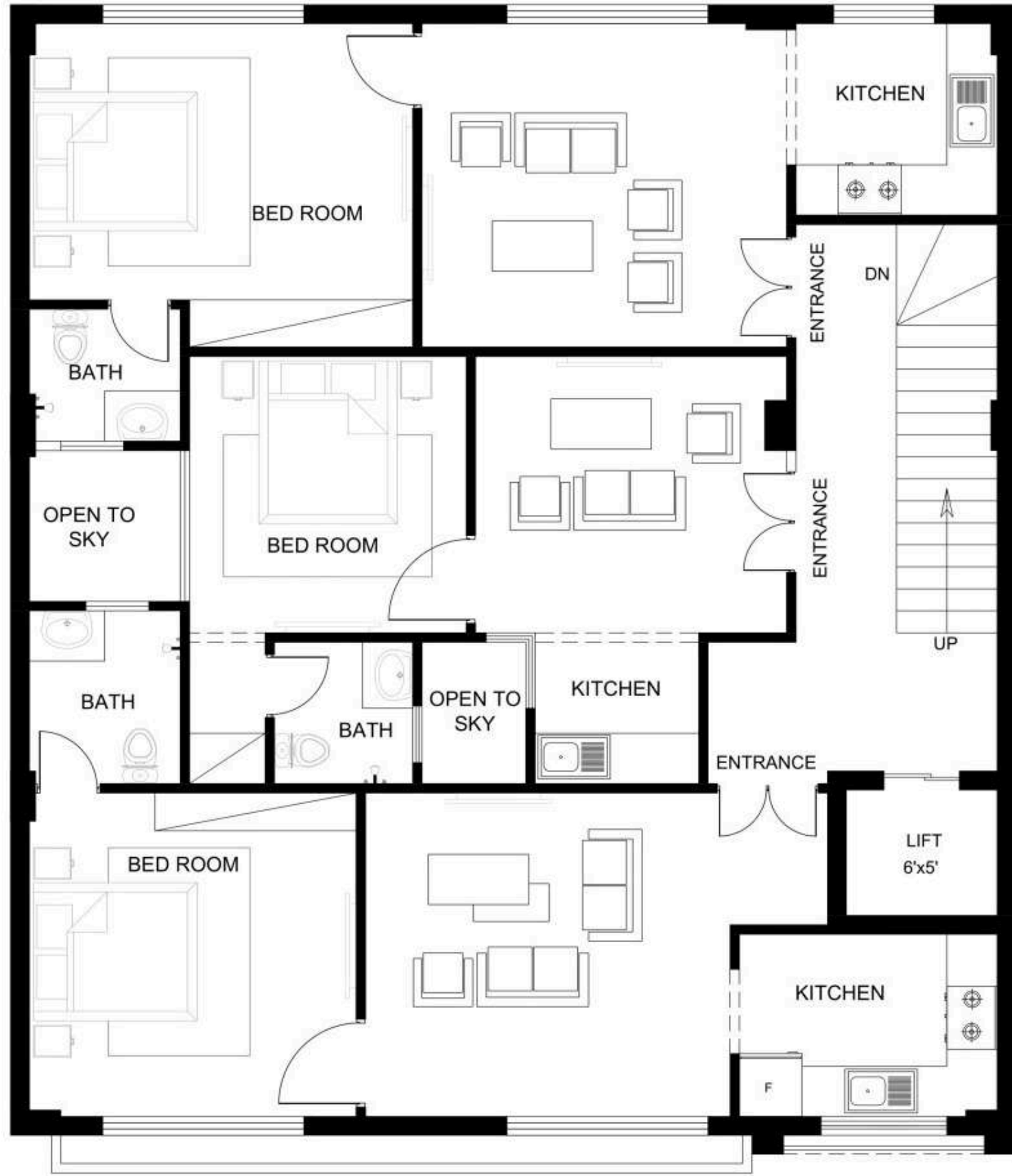








# Layouts





# Shalimar Tower Hotel

- Location** Lahore
- Clients** Shalimar Town
- Program** 3 Bedroom with attach bath
- Area** 1000sqft
- Scope** Interior Design
- Status** Completed



















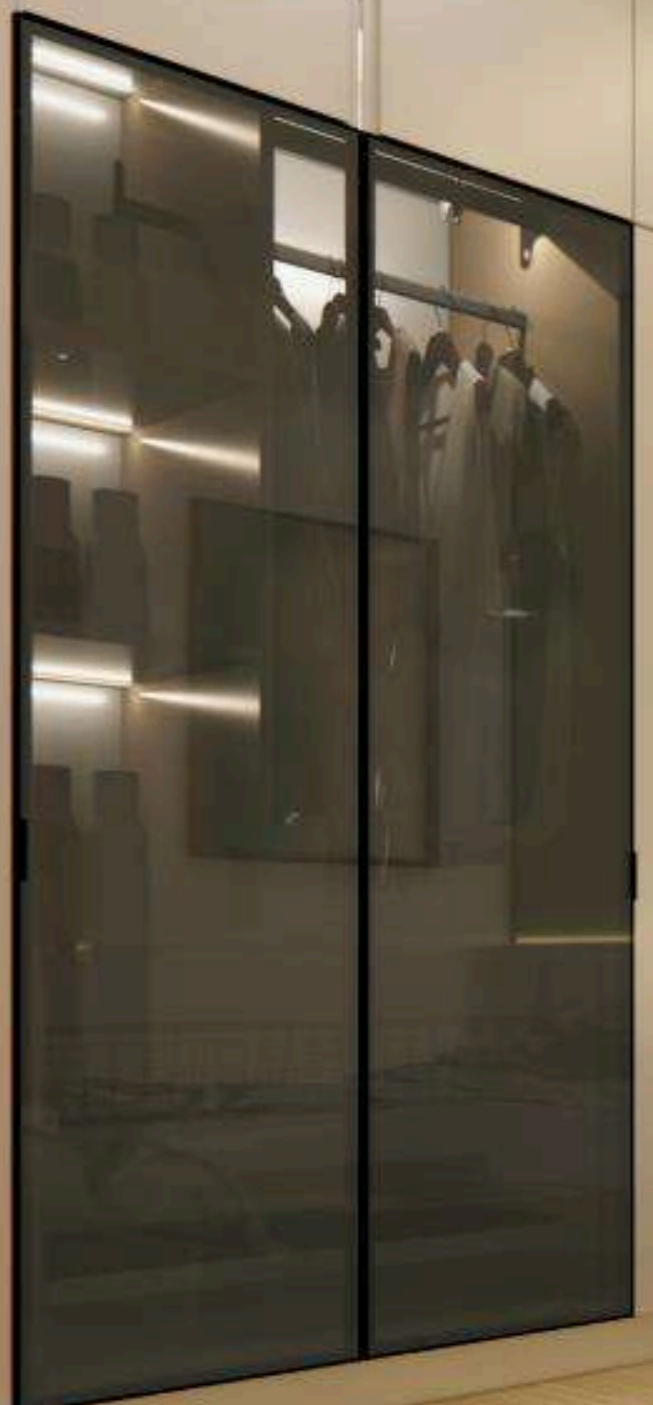




















# SUNNY PARK

**Location** Lahore  
**Clients** Mr Talha Wahid  
**Program** Lounge, Kitchen, 1 Office Room, Guest Lounge  
**Area** 2927sqft  
**Scope** Interior Design  
**Status** Completed

















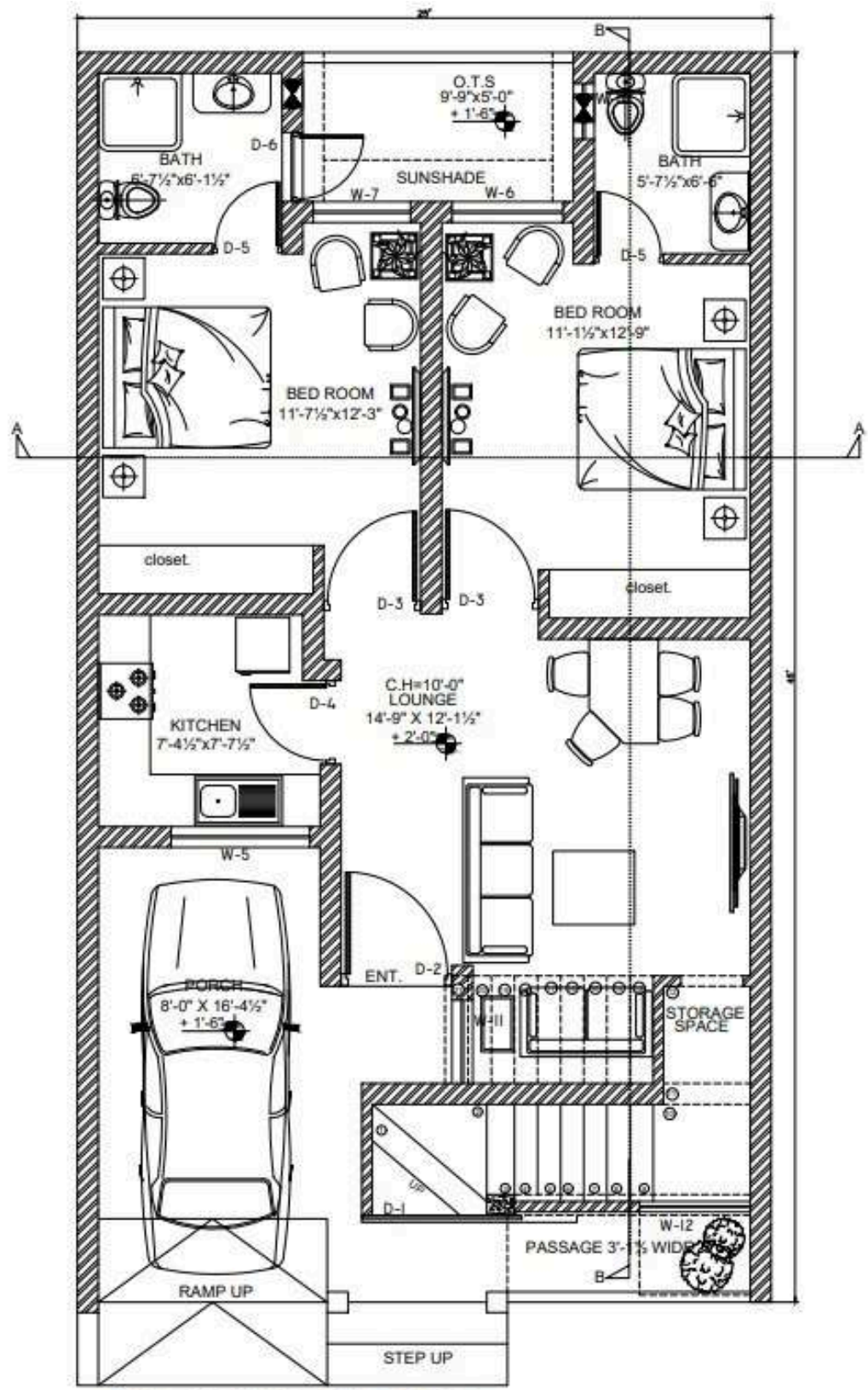




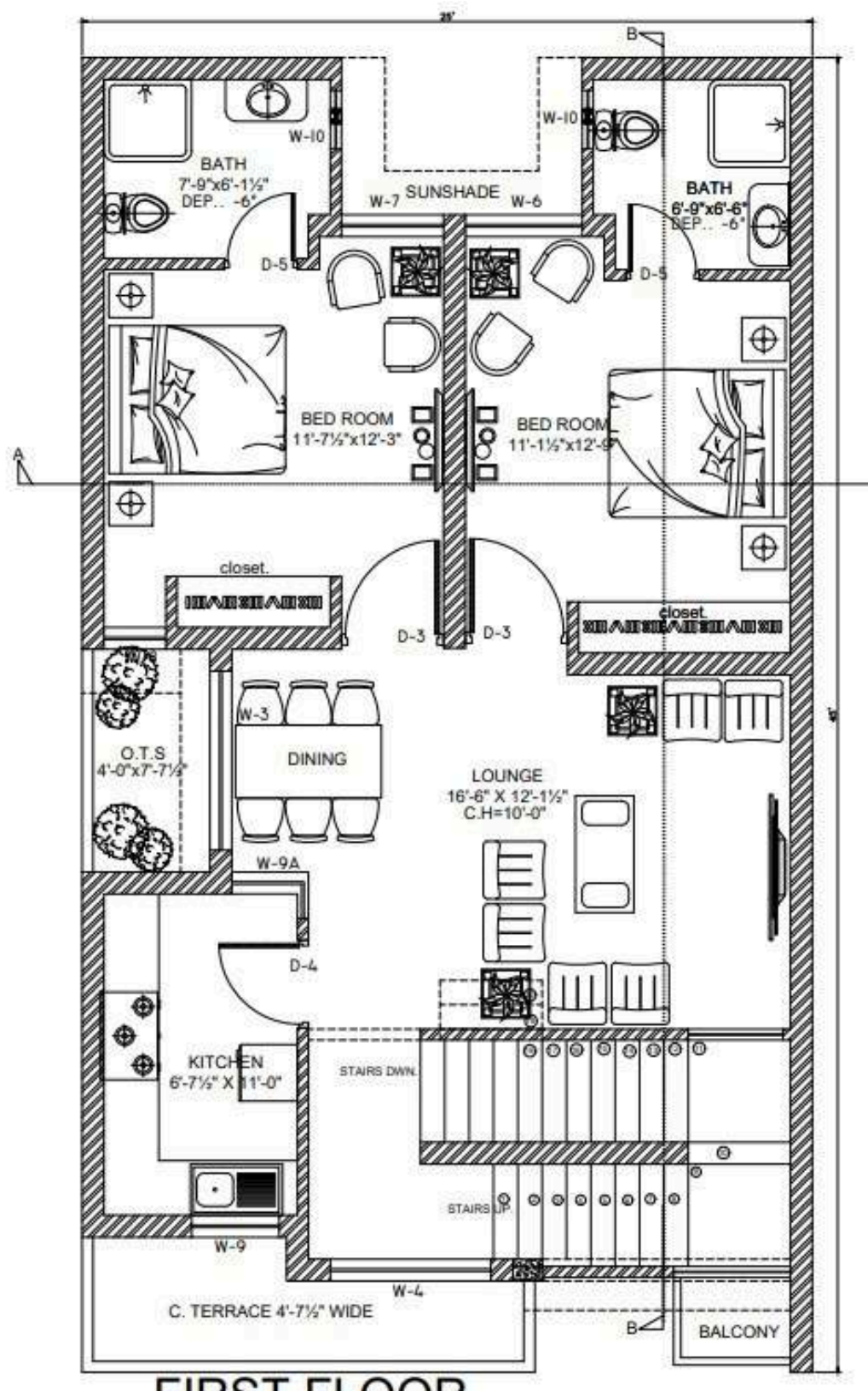




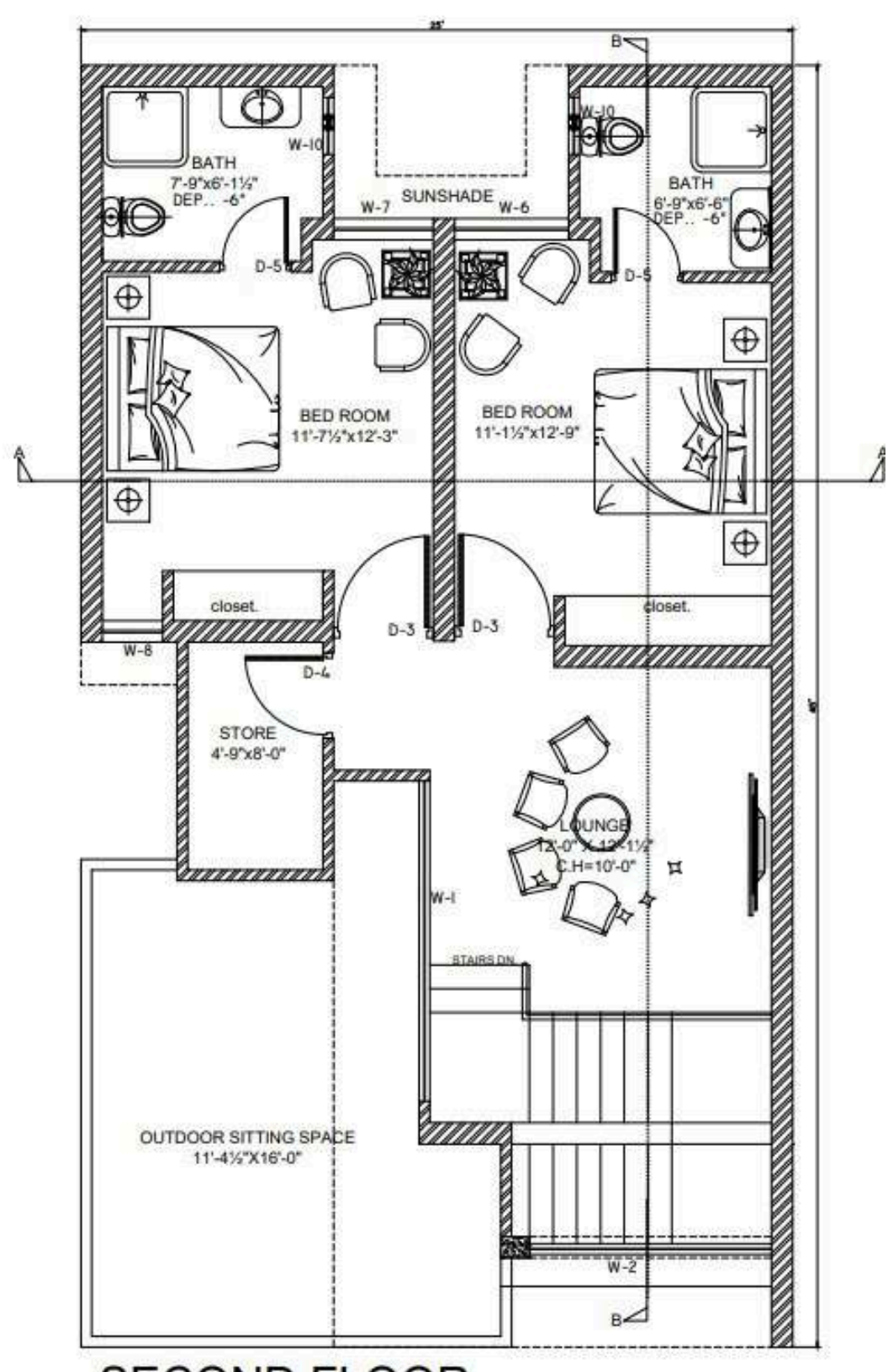
# Layouts



**GROUND FLOOR**  
SCALE: 1/8" = 1'-0" 1048 SQ.FT



**FIRST FLOOR**  
SCALE: 1/8" = 1'-0" 1023 SQ.FT



**SECOND FLOOR**  
SCALE: 1/8" = 1'-0" 856 SQ.FT





# Faletti's Express Hotel

<b>Location</b>	Lahore
<b>Clients</b>	Faletti's Express
<b>Program</b>	Bedroom, with Attach bath
<b>Area</b>	1460sqft
<b>Scope</b>	Interior Design
<b>Status</b>	Completed



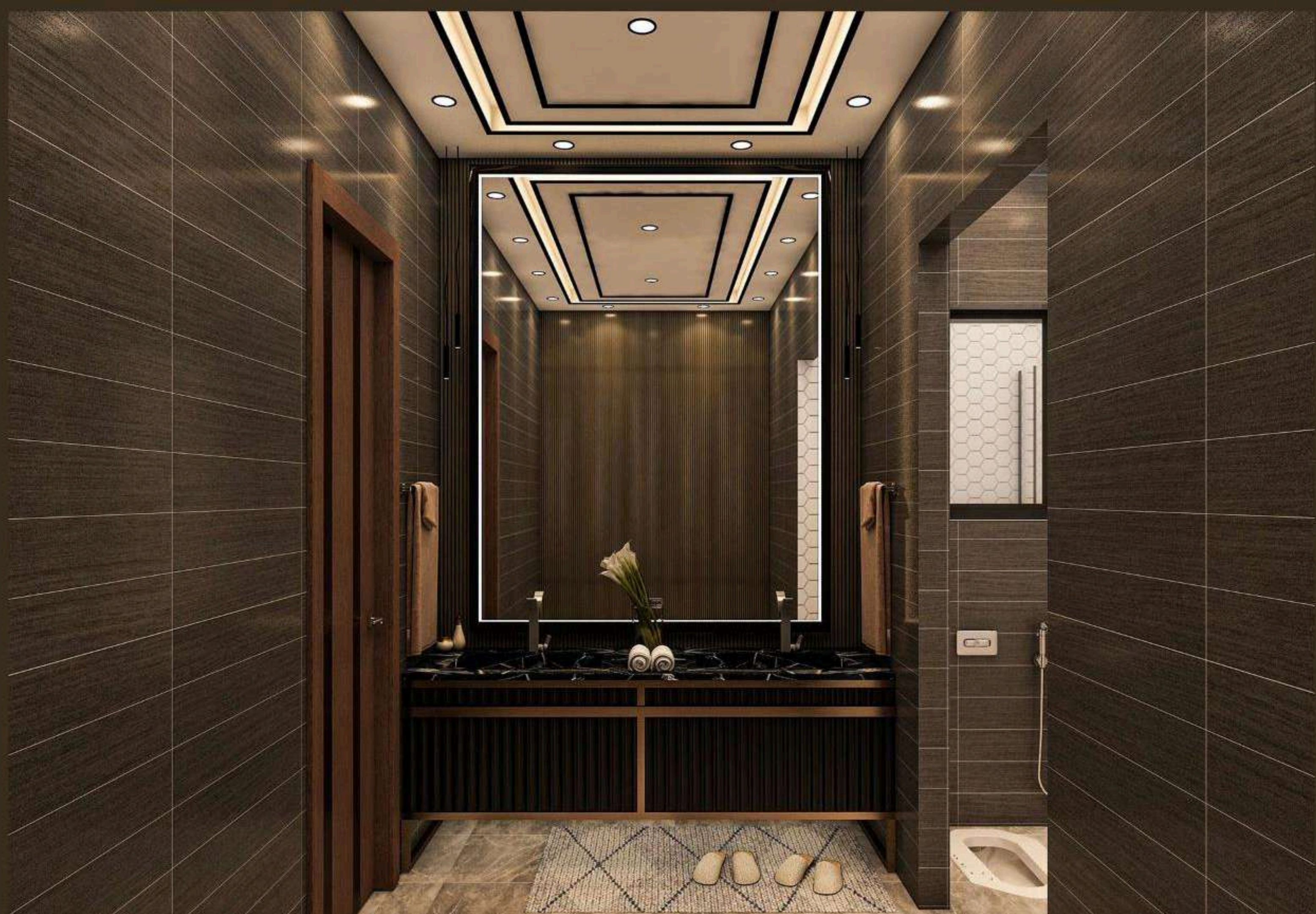




















# Hotel One Tower Gulberg

**Location** Lahore  
**Clients** Mr Ahmad  
**Program** Bedroom, with Attach bath  
**Area** 1200sqft (Apr)  
**Scope** Interior Design  
**Status** Completed

(apr)

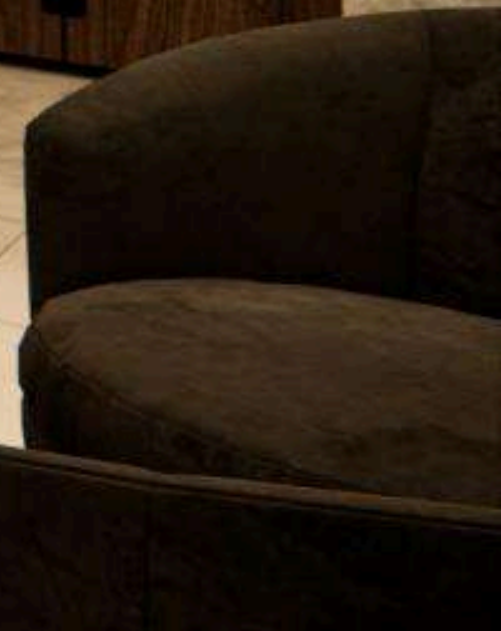
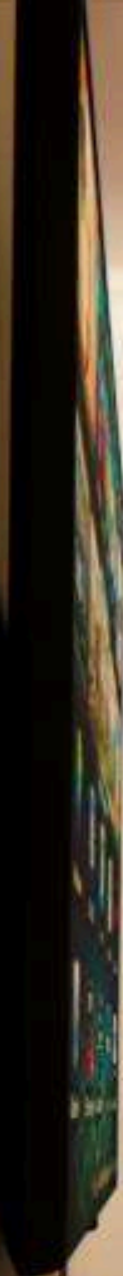
















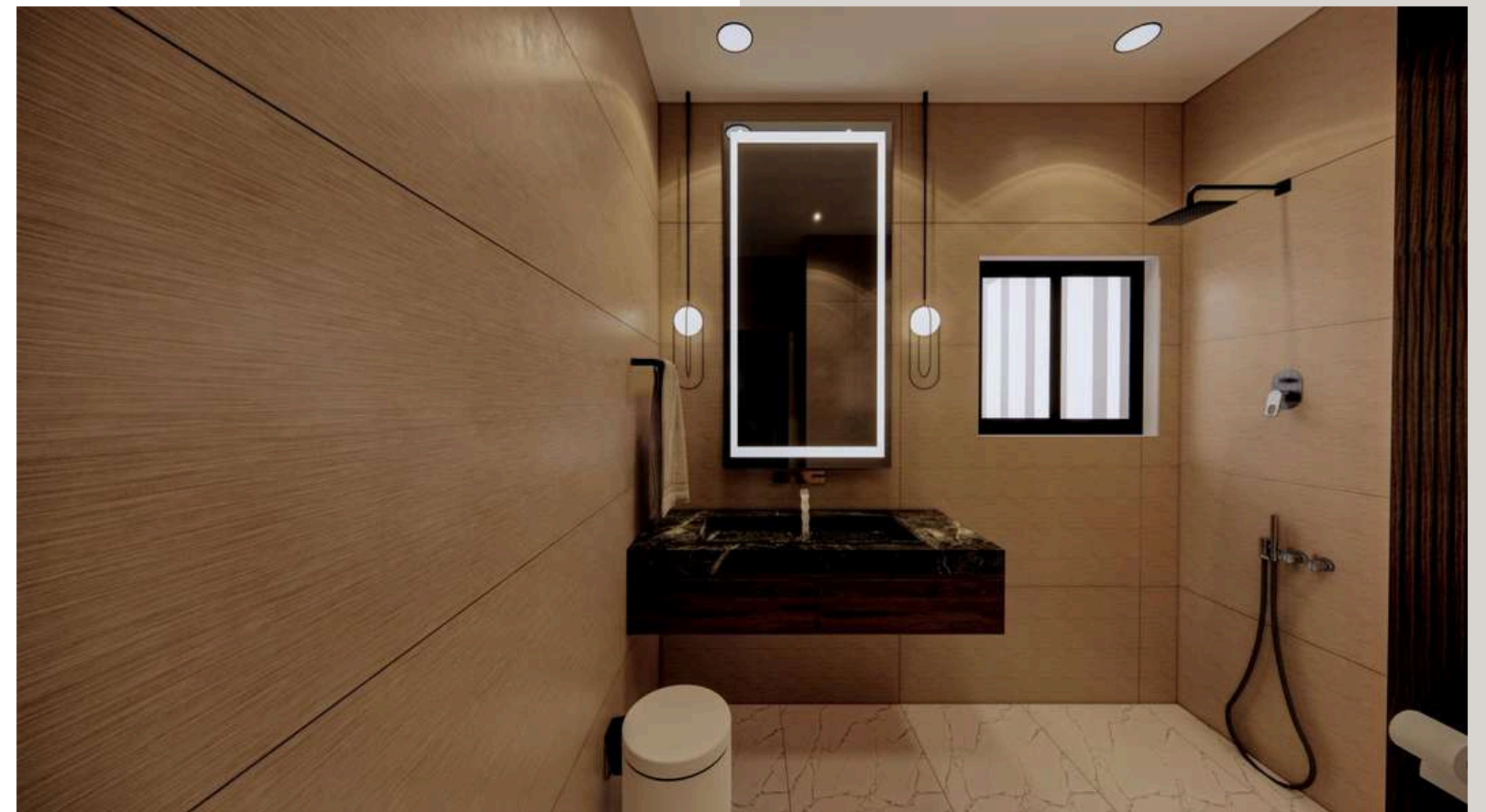






# 1 KanalBahria

**Location** Lahore  
**Clients** Mr Ibrahim  
**Program** 5 Bedroom with attach bath, lounge, entrance Lobby, Dining Room, Drawing Room  
**Area** 13500sqft  
**Scope** Interior Design  
**Status** Completed





















Haier







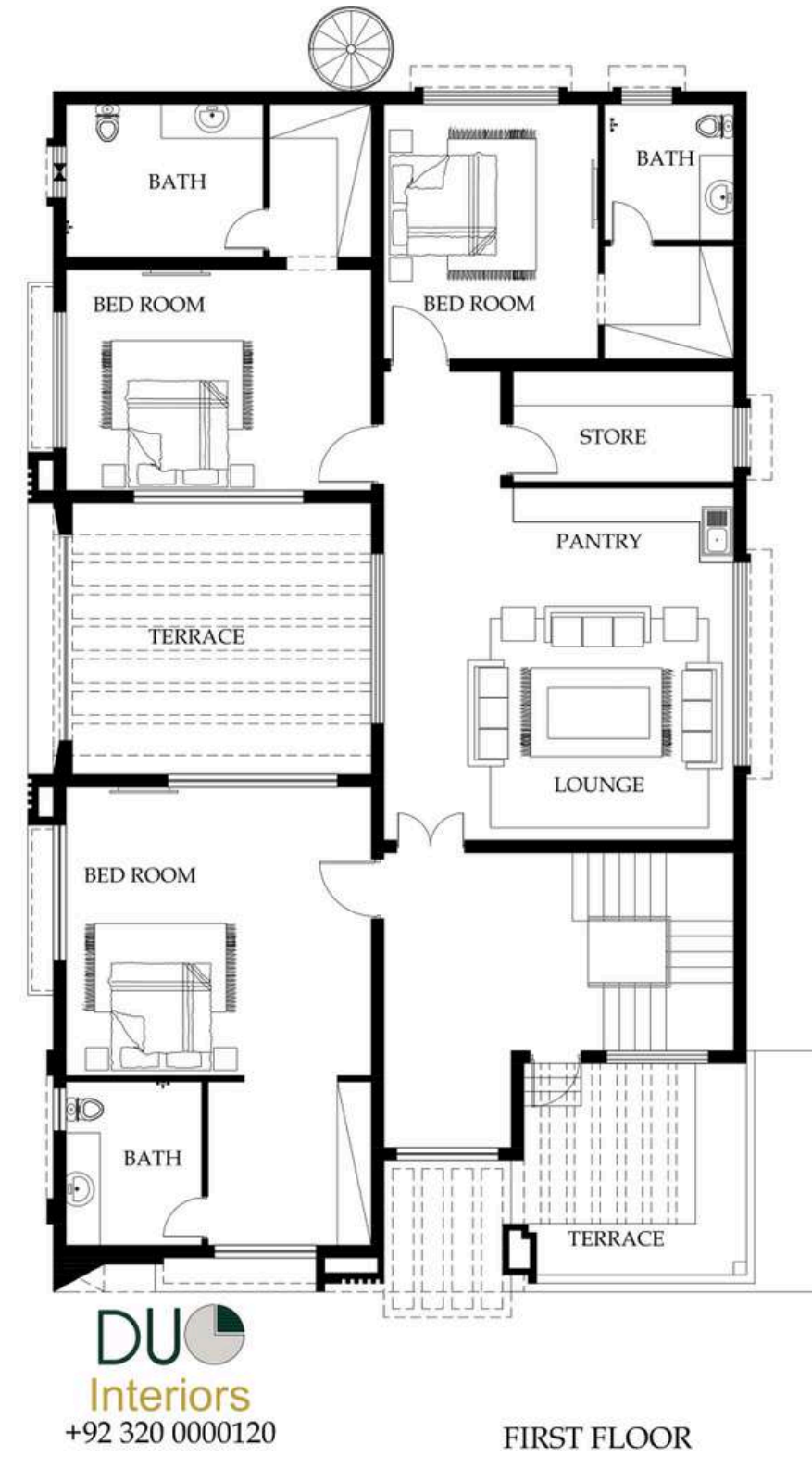
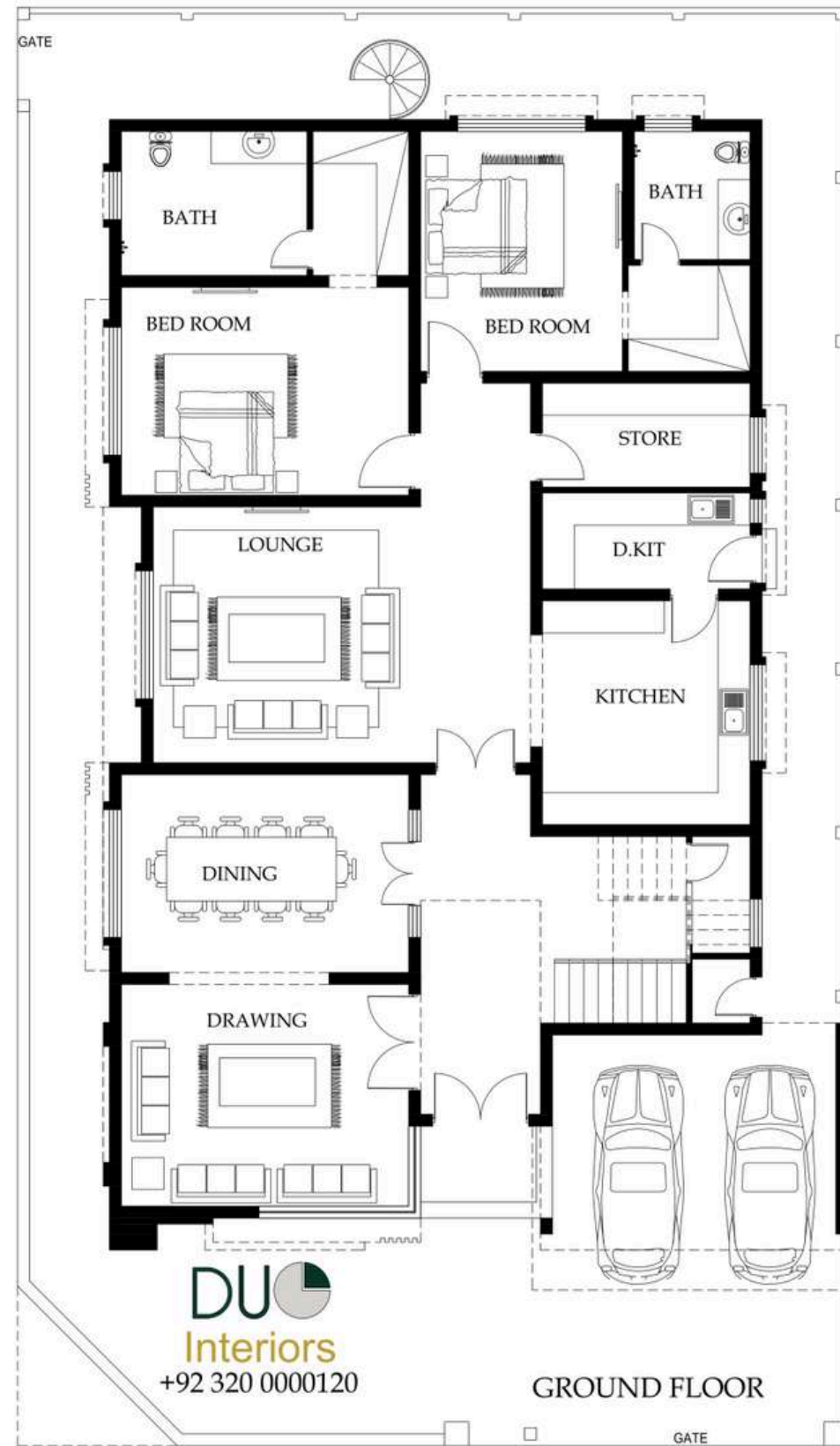








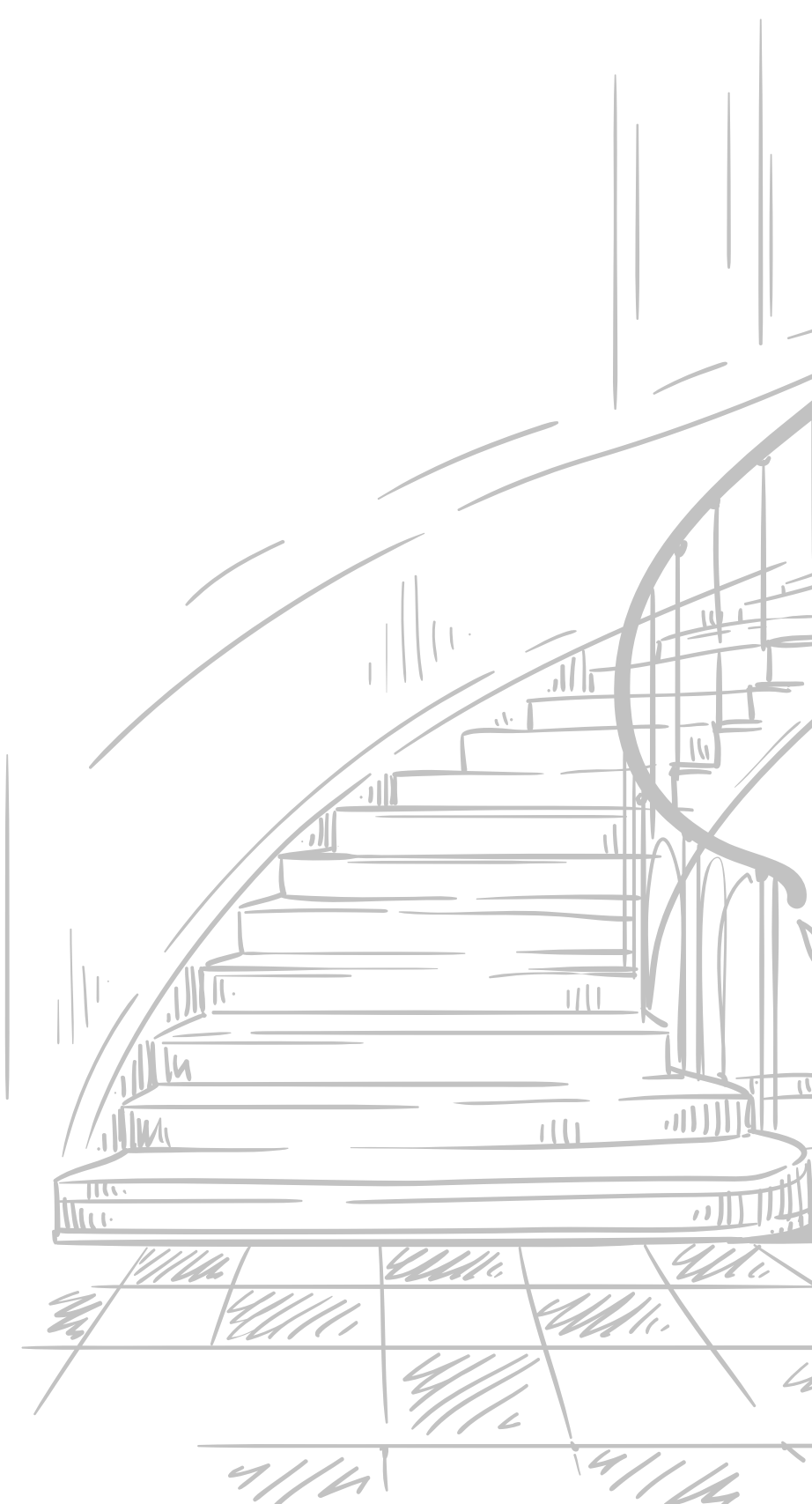
# Layouts



**THANK YOU**



**Duo**  
interiors



0320-0000120



111, Fairways , commercial , defence raya , phase 6 , lahore



[www.duointr.com](http://www.duointr.com)